

iShingle

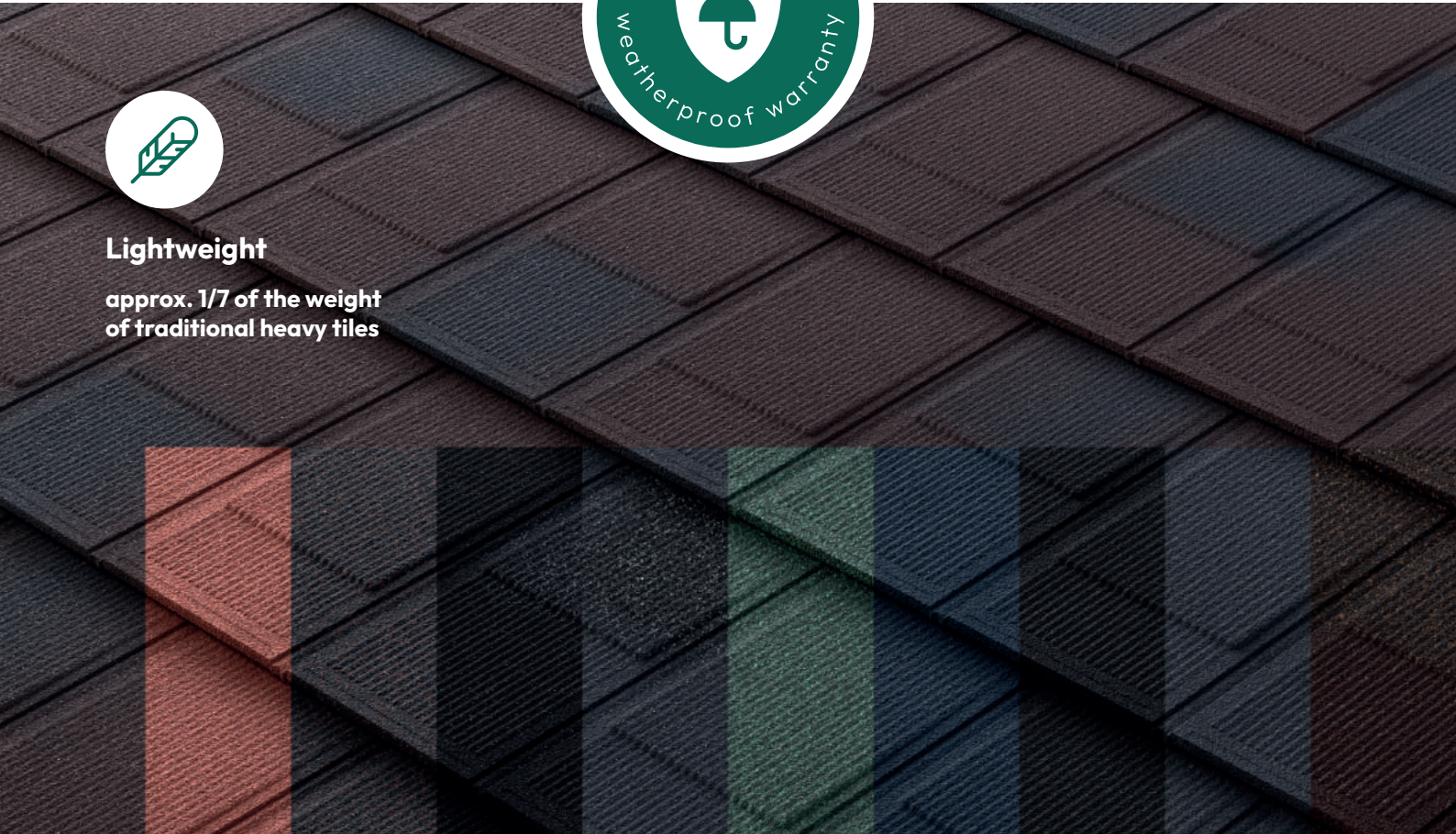
Shingle roof style

Metrotile[®]
worldwide roofing systems



Lightweight

approx. 1/7 of the weight
of traditional heavy tiles



Shingle
Brown Black

Red

Ironbark

Zebra

Spectre

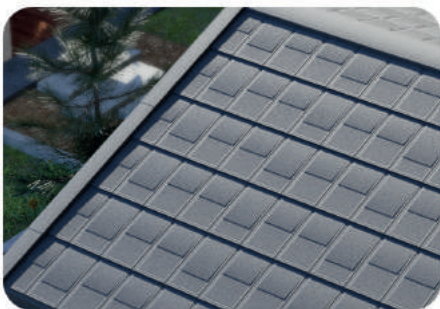
Greenstone

Charcoal

Coal Black

Black

Bister Brown



Storm-proof

withstand high winds,
cyclones even
hurricanes



Aesthetics

the beauty throughout
the entire product
lifespan



Accessories

everything needed
for a start-to-finish
roof installation

iShingle

Shingle roof style

iShingle offers refined aesthetics and superior performance to traditional shingle roofs in every way, from being lightweight to superior durability.

The iShingle, a lightweight roofing and cladding solution backed with a 40-year weatherproof warranty, has unmatched elements resistance and strength for many years to come.



Size - overall (mm)
1330 x 430

Size - cover (mm)
1240 x 375



Tiles per m²
2,17 pcs

Roof cover
0,46 m²



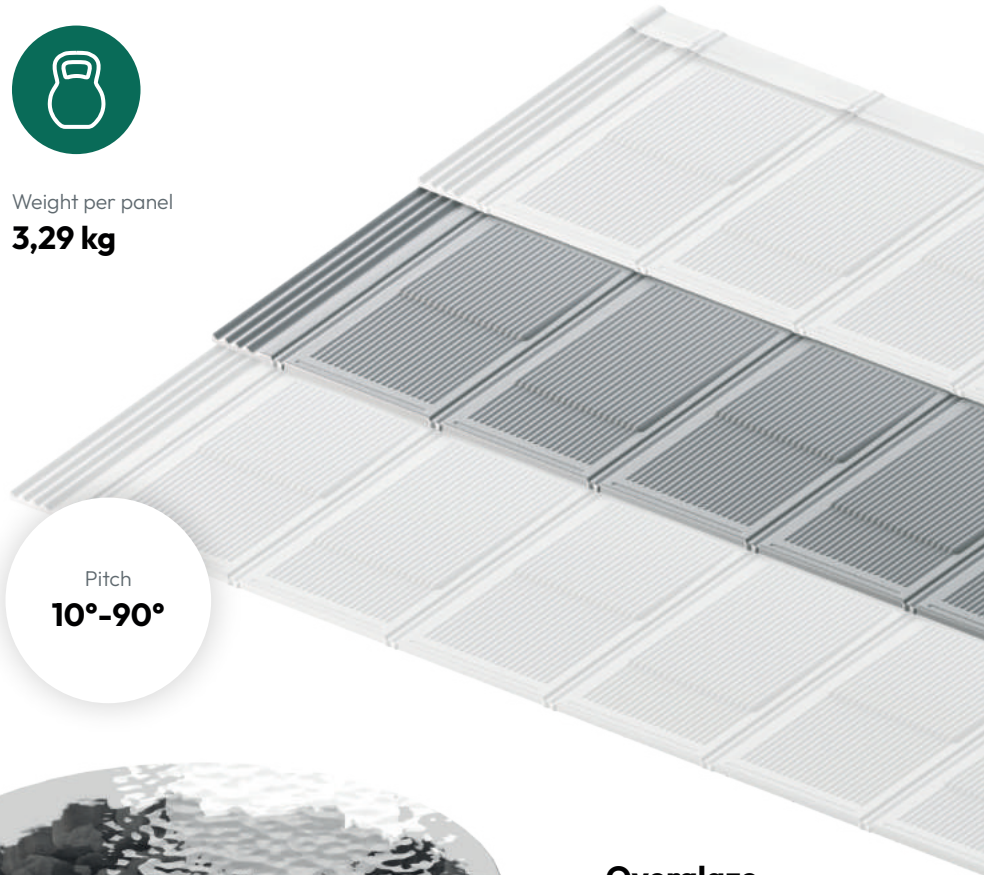
Weight per panel
3,29 kg



Easy installation

handling and cutting are easy, perfect for reroofing

Pitch
10°-90°



Stone Chip

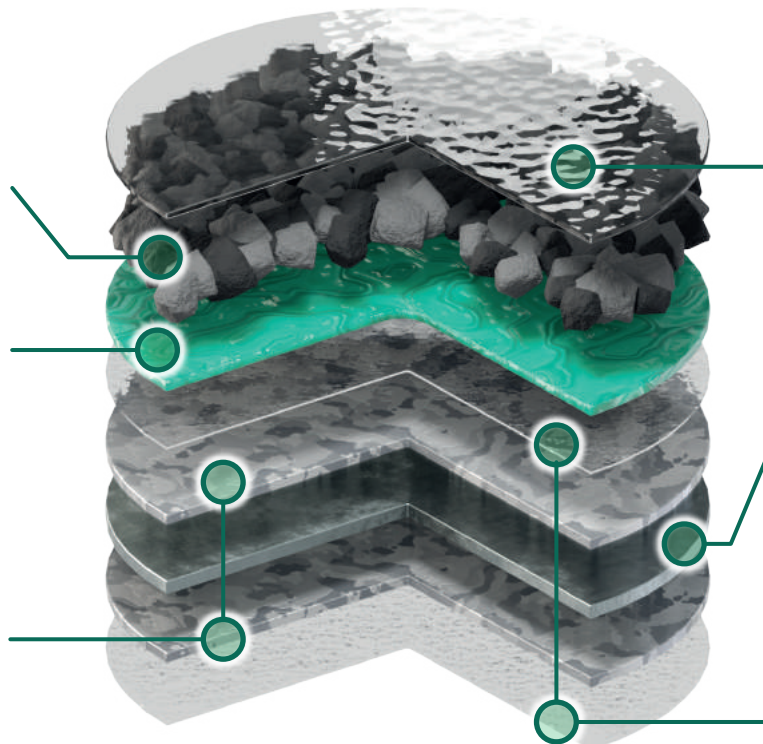
Superb aesthetic with 100% chip coverage

Basecoat

The chips are bonded with polymer acrylic coating with water and UV protection

Special Aluminium-Zinc alloy

55% aluminum, 43,4% zinc and 1,6% silicon



Overglaze

"Water wet" gloss and resistance to physical damage

Steel 0,41 mm

Durable, rigid, lightweight steel core

Transparent Acrylic Coating

Enhances adhesion of subsequent topcoats

IKO Metals Europe NV

Michielenweg 3,
3700 Tongeren, Belgium

(+32) 12 24 18 01

info.europe@ikomaterials.com

 [Metrotile.Europe](https://www.facebook.com/Metrotile.Europe)